

ORWAK HORIZONTAL 1000 ATH

Our fully automated horizontal 100 ton baler meets the challenges by centralized waste handling in many businesses and organizations where huge volumes of recyclable paper-based and plastic wrapping are produced. We offer well-proven technology for special demands! The automatic tying and the continuous baling enable multi-shift operation.



**AUTOMATIC
SOLUTION**

**11-25
T/H**

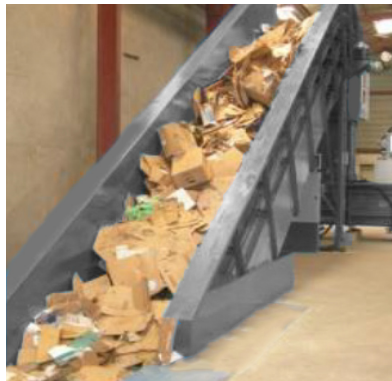
**CAPACITY
CARDBOARD**

1000 KG

**BALE WEIGHT
CARDBOARD**



ORWAK BENEFITS



MORE PRODUCTIVE USE OF TIME

Less time spent on waste handling, more time for your core activities!

MORE SPACE & ORDER

Our balers rapidly minimize the space the waste takes up, keeping aisles free and tidy.

LESS COSTS, MORE VALUE

More compaction = less waste volume to transport. Fewer transports required results in lower transportation costs and reduced CO₂ emissions. Sorting at source yields a higher quality of waste material for recycling.

WHY ORWAK HORIZONTAL?

- Effective large-scale waste handling
- Improved internal and external logistics
- Safe and comfortable working environment
- Excellent control over the throughput
- Increased income when delivering high-quality bales directly to the recycling industry.

ORWAK®
PART OF **SULO** GROUP

ORWAK HORIZONTAL 1000 ATH

Smart fully automated solution

CONTINUOUS FEEDING AND OUTPUT

A completely automated waste management solution designed for continuous infeed and equipped with an automatic horizontal strapping system with adjustable wire links, which enables you to yield optimal output.

EQUIPPED WITH A PROGRESSIVE CUTTING SYSTEM

for extra effective compaction.



OPTIMAL FEATURES

- Well proven technology
- Auto start (photocell) as standard
- High speed: fast throughput
- Adjustable bale length
- Bale counter
- Oil cooler
- Horizontal automatic tying

HORIZONTAL 1000 ATH IS OPTIMIZED FOR:

PAPER

- Paper sacks
- Cardboard
- Tetra Pak

PLASTIC

- Shrink film
- PET/PEHD

A VARIETY OF INFEED OPTIONS

To fit the conditions in your environment, our horizontal balers offer a wide choice of infeed systems: manual, by bin, air-transport and conveyor belt. Our balers can also easily be equipped with shredders, bottle presses, rufflers, strippers and different types of hoppers.

OPTIONS

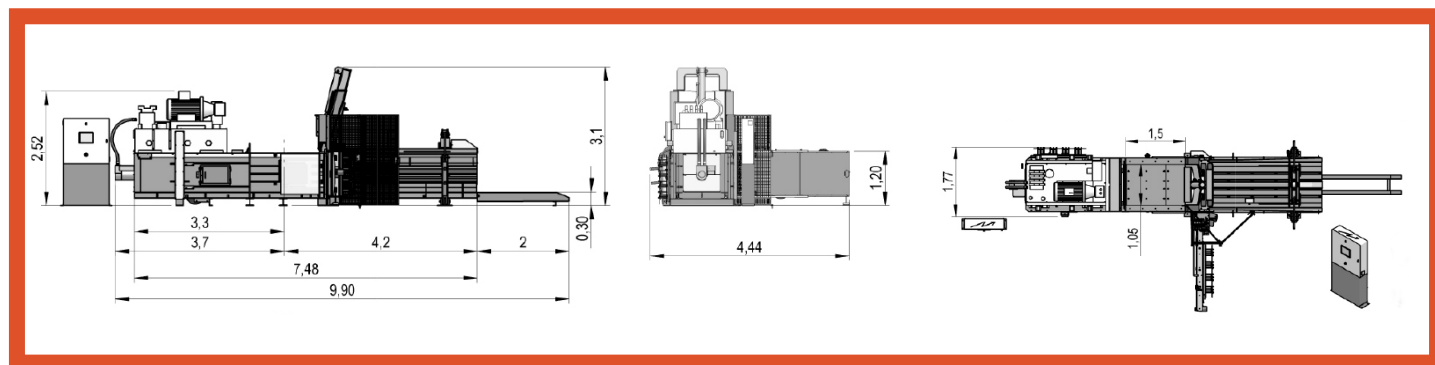
- Conveyor belt
- Heating systems
- Stamper

More special options on demand

DIMENSIONS & SPECIFICATIONS

TECHNICAL SPECIFICATIONS

| MODEL | MACHINE DIMENSIONS (LXWXH) EXCL BALE EXIT | FEED OPENING | INFEED CAPACITY | PRESS FORCE | MOTOR | SURFACE PRESSURE | CYCLES PER MINUTE | CHANNEL SECTION | OIL TANK CAPACITY |
|-----------------|---|--------------|---------------------|-------------|--------------|-------------------------|-------------------|-----------------|-------------------|
| 1000 ATH, 55 kW | 7860x4435x3060 mm | 1550x1100 mm | 1.36 m ³ | 100 ton | 55 kW/75 Hp | 11.3 kg/cm ² | 3.5 | 1100x800 mm | 1000 L |
| 1000 ATH, 75 KW | 7860x4435x3060 mm | 1550x1100 mm | 1.36 m ³ | 100 ton | 75 kW/100 Hp | 11.3 kg/cm ² | 5 | 1100x800 mm | 1500 L |



TECHNICAL SPECIFICATIONS

| MODEL | TOTAL MACHINE WEIGHT | PRODUCTION RATE WITH LOAD | PRODUCTION ACCORD. TO DENSITY | AUTOMATIC BINDING | BALE SIZE (ADJUSTABLE LENGTH) | BALE WEIGHT CARDBOARD <small>DEPENDS ON BALE LENGTH</small> |
|-----------------|----------------------|---------------------------|-------------------------------|-------------------|-------------------------------|--|
| 1000 ATH, 55 kW | 15000 kg | 220 m ³ /h | 11-18 t/h | 4 wires Ø 3.4 | 1100x800x800-2150 mm | 400-1000 kg |
| 1000 ATH, 75 KW | 15500 kg | 320 m ³ /h | 16-25 t/h | 4 wires Ø 3.4 | 1100x800x800-2150 mm | 400-1000 kg |

We reserve the right to make changes to specifications without prior notice. Bale weights are dependent upon material type.

GAMA COMMUNICATION LTD

Gama Bldg.
16 Menachem Begin St.
5270003 Ramat Gan
ISRAEL
Phone: +972-3-6130666
E-Mail: gama@actcom.co.il

GAMAENGINEERING.CO.IL

ORWAK
PART OF SULO GROUP