

UNTHA

shredding technology

organic waste



**Tailor-made solutions for
shredding organic waste**

www.untha.com

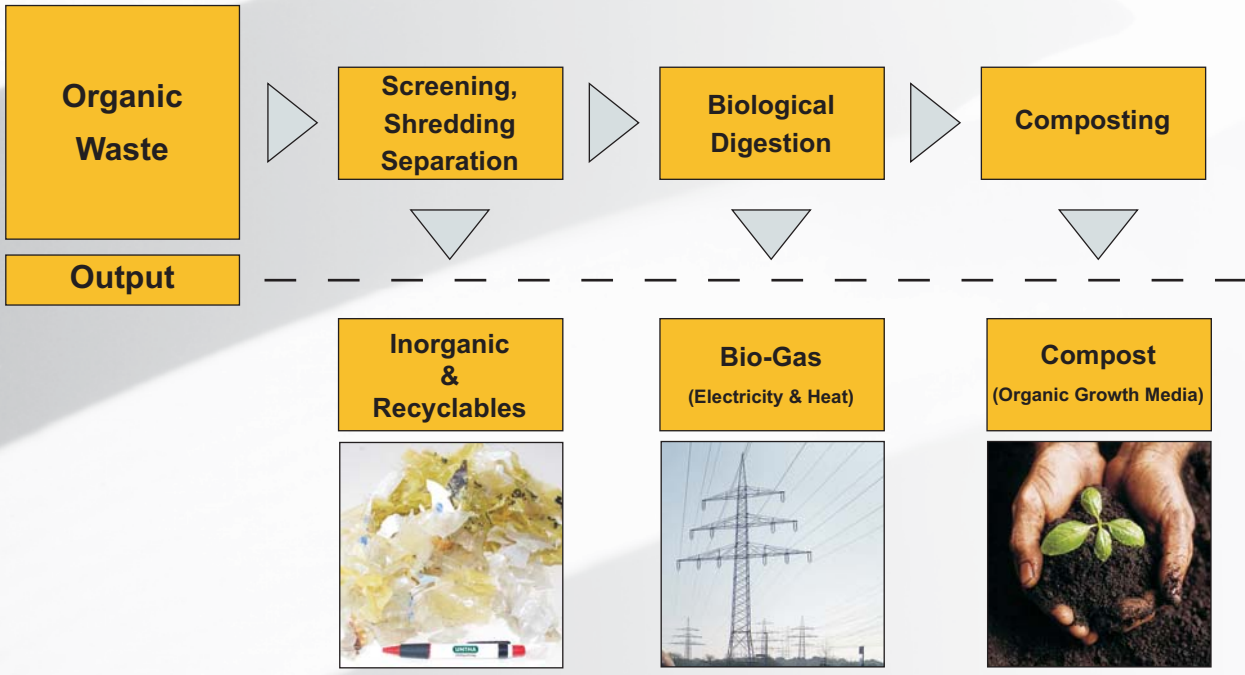


There is a tailor-made UNTHA shredding solution for every area of use

Application area

- ▶ Slaughterhouse and animal waste
- ▶ Grocery market waste (fruit & veg)
- ▶ Packaged foods
- ▶ Plant offcuts
- ▶ Organic waste bins
- ▶ Preserves
- ▶ Unfinished food / unused parts of ingredients
- ▶ Bottled and filled drinks

A critical factor in the processing of organic waste is the **desired particle size** of the materials being shredded. For this purpose **UNTHA has developed special cutting systems** with material-specific tooth and gap geometry. This enables the machines **to achieve excellent throughput results** and a **high-level processing safety** for the **production of compost and organic gases**.





There are lots of good reasons for choosing an UNTHA shredding solution

The **reliable and robust RS30 and RS40 shredders** have proven their qualities over decades and were specially **developed for a wide range of applications**. They can be operated as 'stand-alone' solutions or integrated as parts of complex lines of processing equipment. They are particularly valued for their **high availability, high throughput rates, with low maintenance and energy consumption costs**.

High availability

- due to robust construction
- due to quick and reliable servicing
- due to quick and easy maintenance
- due to rapid delivery of spare parts

Low running costs

- due to low power consumption
- due to low cost of maintenance

High throughput

- due to customised cutting systems

Low emissions (noise, dust, vibrations)

- due to slow running cutting shafts

Very resistant to unshreddables

- due to slow turning cutting shafts
- due to superior cutting tool materials

Pre-defined particle size

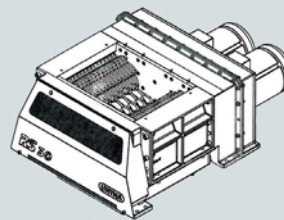
- due to customised cutting disc geometry

Space-saving integration

- due to compact structure

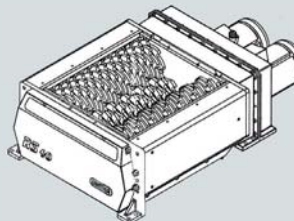
Technical data

RS30 4-Shaft Shredder



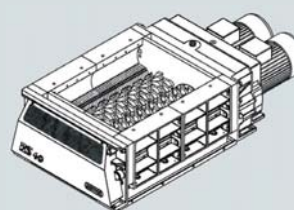
Throughput* [kg/h]	ca. 2.500
Driving power [kW]	11
Cutting unit (width) [mm]	410
Cutting unit (depth) [mm]	560
No. of blade shafts [Stk]	4
Speed main shafts [rpm]	23
Weight [kg]	1.000
Dimensions LxBxH [mm]	1.260x890x620

RS40 4-Shaft Shredder



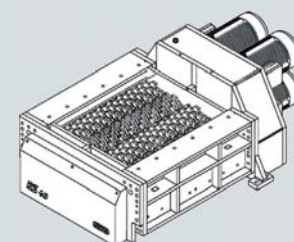
Throughput* [kg/h]	ca. 5.000
Driving power [kW]	22
Cutting unit (width) [mm]	750
Cutting unit (depth) [mm]	700
No. of blade shafts [Stk]	4
Speed main shafts [rpm]	20
Weight [kg]	1.600
Dimensions LxBxH [mm]	1.670x1.000x460

RS40 2-Shaft Shredder



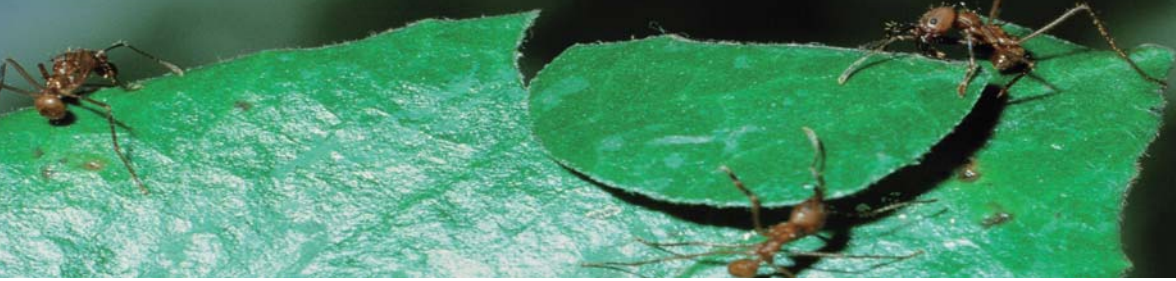
Throughput* [kg/h]	ca. 10.000
Driving power [kW]	37
Cutting unit (width) [mm]	900
Cutting unit (depth) [mm]	680
No. of blade shafts [Stk]	2
Speed main shafts [rpm]	38/48
Weight [kg]	2.150
Dimensions LxBxH [mm]	2.150x1.000x600

RS40 2x2-Shaft Shredder



Throughput* [kg/h]	ca. 20.000
Driving power [kW]	88
Cutting unit (width) [mm]	1.054
Cutting unit (depth) [mm]	860
No. of blade shafts [Stk]	4
Speed main shafts [rpm]	48
Weight [kg]	5.000
Dimensions LxBxH [mm]	2.400x1.550x790

*) Stated volumes depend on material specifications



UNTHA shredding technology - Tradition and Innovation



Sales partner



Anton Unterwurzacher Maschinenbau GmbH

Moldanstraße 141, A-5431 Kuchl / Salzburg, Austria, Tel +43 6244 7016 0, Fax +43 6244 7016 1

info@untha.com, www.untha.com