

UNTHA

shredding technology

product



RS30 / RS40

with patented 4-shaft shredding system

www.untha.com



Application

Our reliable and robust RS30 and RS40 shredders have been meeting client requirements for decades and were developed for a broad spectrum of purposes. Like all UNTHA shredders, the machines can be used as stand-alone solutions or be integrated in more complex plants. They stand out with their high throughput rates, low maintenance/energy costs and homogenous shredded material and ensure high economic efficiency. Homogenously shredded end products can be processed with great efficiency ensuring a highly economic recycling process.

Examples of practical applications:

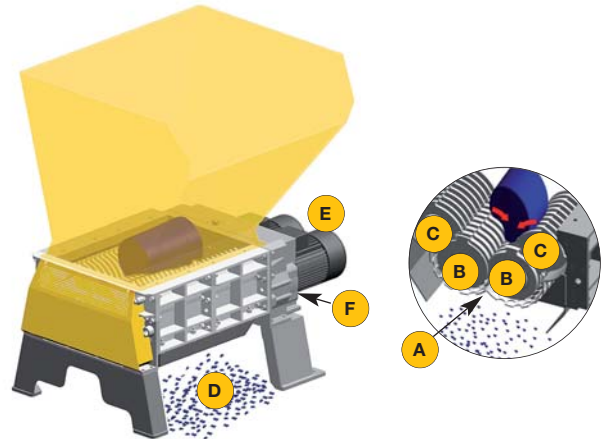
- Bank notes • Bark • Biowaste • Bumpers • Car internal linings • Cardboard • Cardboard tubes • Carpets
- CD-ROMS • Chipboards • Dashboards • Domestic Waste • Files • Films • Foam sheets • Garden waste
- Leather • Medical waste • Metals • Metal turnings
- Oil filters • Paper • Packaging materials • Plastic bottles • Plastic boxes • Plastic drums • Production waste
- Radioactive waste • Rubber Waste • Stamping lattices • Tetra-paks • Textiles • Transformer windings
- Veneers • Waste wood • Workshop waste

The cutting system



All models of the RS30 and RS40 series are equipped with the patented UNTHA four-shaft cutting system with perforated screen (patent no. 319535).

Function and design



- The material to be shredded is automatically drawn into the cutting system and pre-shredded as well as re-shredded in one go.
- If material does not fall through the perforated screen after shredding (A), it is taken up by the teeth of the main cutting system (B) and moved back up (pre-shredding).
- The next shredding cycle (re-shredding) begins when the pre-shredded material is taken up by the secondary cutters (C).
- The machine is driven by two electric drive motors (E) and a 3-step spur gear (F).
- The final product is precisely defined, homogenous granules (D).

RS30 / RS40 4-shaft shredding system

For more information please visit www.untha.com

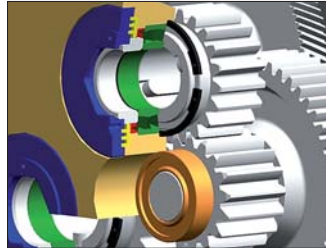


Persuasive technical solutions



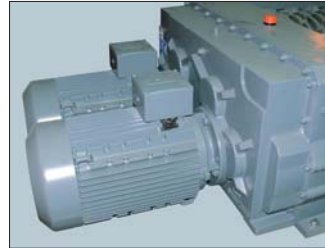
Machine casing

- Solid cast frame
- High strength due to reinforcement ribs
- Modular design
- Strong floating bearing plate



Shaft bearing

- Spherical roller bearings exclusively
- Additional sealing through labyrinth packing
- Lubrication for floating bearing
- High-quality bearings with long service life are used



Driving unit

- The cutters are driven by two individually controlled electric motors
- Low-maintenance 3-step spur gear, running in oil bath, with high efficiency
- Smooth running due to helical gearing of the first step



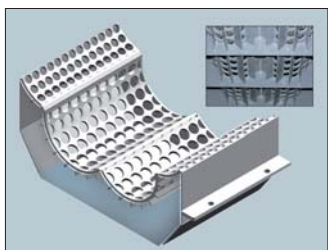
Cutting system

- The cutting system consists of main cutters and secondary cutters
- The chopping disks are drop forged and case-hardened
- The chopping disk collar is forged in one piece with the chopping disk
- The cutters are mounted on four hexagonal shafts
- Choice of more the 350 different kind of cutting disks

NEW! Rev count regulation via frequency converter (optional)



- Ideal for shredding problematic materials
- Rev count can be set for each individual shaft
- Infinitely settable throughput volume via rev count control
- Reduced reversal occurrence due to optimal throughput set-up



Perforated screen

- The perforated screen covers all four cutting shafts
- Extremely high throughput through 4 screen floors
- Equipped with chip breaker for reducing overly long material

Control unit with automatic recognition of foreign material

- Siemens SPS control
- Control cabinet connected to the machine by a 4m cable
- Recognition of foreign material standard - The control unit stops the shredder automatically if an object that cannot be shredded (such as c-clamps, hammers, etc.) is pulled in by the rotor, thereby largely preventing damage.
- Further control features: Automatic reversing (in the event of motor overload); automatic stop (when machine idles)
- Integrated potential-free contact as standard equipment for discharge unit provided by client (suction, conveyor belt, screw conveyor, ...)

Optional equipment

- Customised filling hoppers
- Customised cutting disks available
- Customised machine supports
- Wear plates
- Frequency converter
- Pressing devices
- Discharge screws
- Central lubricant distributor



RS40 with option
pressing device
HBE300



UNTHA shredding technology – Innovation in size reduction



Tradition and Innovation

In 1970, Anton Unterwurzacher founded a company which has since become an international player: UNTHA shredding technology. In 1980, he developed the innovative four-shaft cutting system and specialised in the production of shredders.

UNTHA shredders stand out with their high quality, reliability and sturdiness. The machines are tailored to customer specifications. Delivery times can be kept short, since the majority of construction work is done by UNTHA itself. High quality and productivity are ensured by state-of-the-art production equipment.

UNTHA offers expertise in consulting, production and sales world-wide!

The team of UNTHA shredding technology, with its 100 highly qualified and motivated staff, provides comprehensive consulting and support. The international sales network, with partners in more than 60 countries, ensures swift processing of your inquiries as well as immediate service on site.

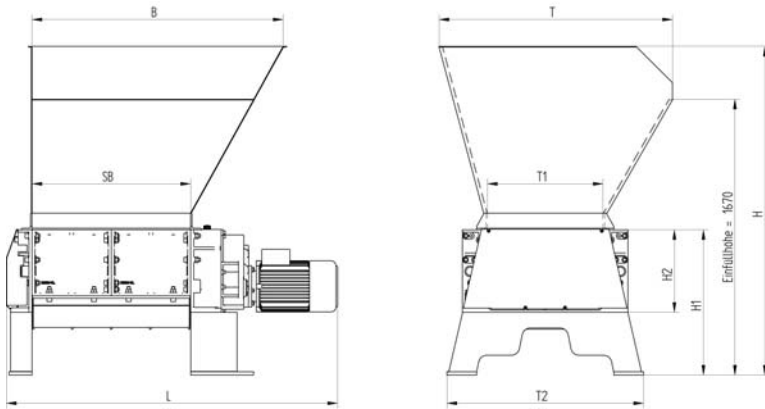
We keep our promises!

UNTHA shredding technology – your reliable expert partner in shredding technology – employs the most advanced technology to find the optimum solutions for your requirements. The highest technical standards and our comprehensive service and support guarantee trouble-free operation of equipment and keep stand-still times of your plant to an absolute minimum.

30 years of expertise
More than 8,000 shredders
in daily operation!



Technical data RS30 / RS40 4-shaft shredding system



All dimensions in mm | SB = width of cutting system

Machine type / Dimensions	SB	L	H	H1	H2	B	T	T1	T2
RS30 / 2 x 5.5 kW	450	1,250	1,900	820	450	1,000	1,280	560	1,090
RS30 / 2 x 7.5 kW	450	1,300	1,900	820	450	1,000	1,280	560	1,090
RS30 / 2 x 11 kW	450	1,340	1,900	820	450	1,000	1,280	560	1,090
RS40 / 22 kW	450	1,360	1,970	820	450	1,000	1,370	700	1,190
RS40 / 22 kW	750	1,660	1,970	820	450	1,300	1,370	700	1,190
RS40 / 30 – 37 kW	480	1,530	1,990	880	500	1,045	1,415	700	1,190
RS40 / 30 – 37 kW	750	1,800	1,990	880	500	1,315	1,415	700	1,190
RS40 / 30 – 37 kW	960	2,010	1,990	880	500	1,525	1,415	700	1,190

Model series		RS30	RS40 / 22 kW	RS40 / 30-37 kW
Driving power	[kW]	2x5.5 / 2x7.5 / 2x11	2x11	2x15 / 2 x 18.5
Charging hole	[mm]	450 x 560	450/750 x 700	480/750/960 x 700
No. of blade shafts		4	4	4
Speed main shaft	[rpm]	approx. 23	approx. 20	approx. 24
Speed secondary shaft	[rpm]	approx. 34	approx. 27	approx. 32
Perforated screen Ø	[mm]	15 – 40	15 – 40	15 – 40
Weight	[kg]	approx. 1,100	app. 1,400/1,700	app. 1,700/2,100/2,400
Noise level, operation	[dB]	approx. . 80*	approx. 80*	ca. 80*
Throughput*				
– Perforated screen Ø 15 – 25 mm	[m³/hr]	1 – 3	1 – 4	2 – 5
– Perforated screen Ø 30 – 40 mm	[m³/hr]	3 – 5	3 – 6	4 – 8

*) depending on: quality of material and diameter of perforated screen

Distributors

UNTHA
shredding technology

Anton Unterwurzacher Maschinenbau GmbH

Moldanstraße 141, A-5431 Kuchl / Salzburg, Austria, Tel +43 6244 7016 0, Fax +43 6244 7016 1
untha@untha.com, www.untha.com